

A corporate office  
was replaced by a  
**retro-pop** look and feel using  
**bespoke lighting** creating  
a relaxed setting

**Panagram**

Industry Type: Office Workspace

Location Size: 52,000 ft<sup>2</sup>

Building Type: Commercial

Project Value: £1,000,000

Project Length: 12 Weeks

Project Location: London



## Panagram

Industry Type: Office Workspace

Location Size: 52,000 ft<sup>2</sup>

Building Type: Commercial

Project Value: £1,000,000

Project Length: 12 Weeks

Project Location: London

---

Panagram is an office building based in the heart of London's Clerkenwell. The building has open planned floors with high ceilings. The lobby has a collaborative area for guests and tenants to meet and greet with a remodelled reception area. Roof Terraces Passenger lifts are lit with Modern suspended pendant lighting

RSR were tasked with creating a **relaxed working environment** by designing custom lighting inspired by its new **retro-pop look and feel**

## Scope of works

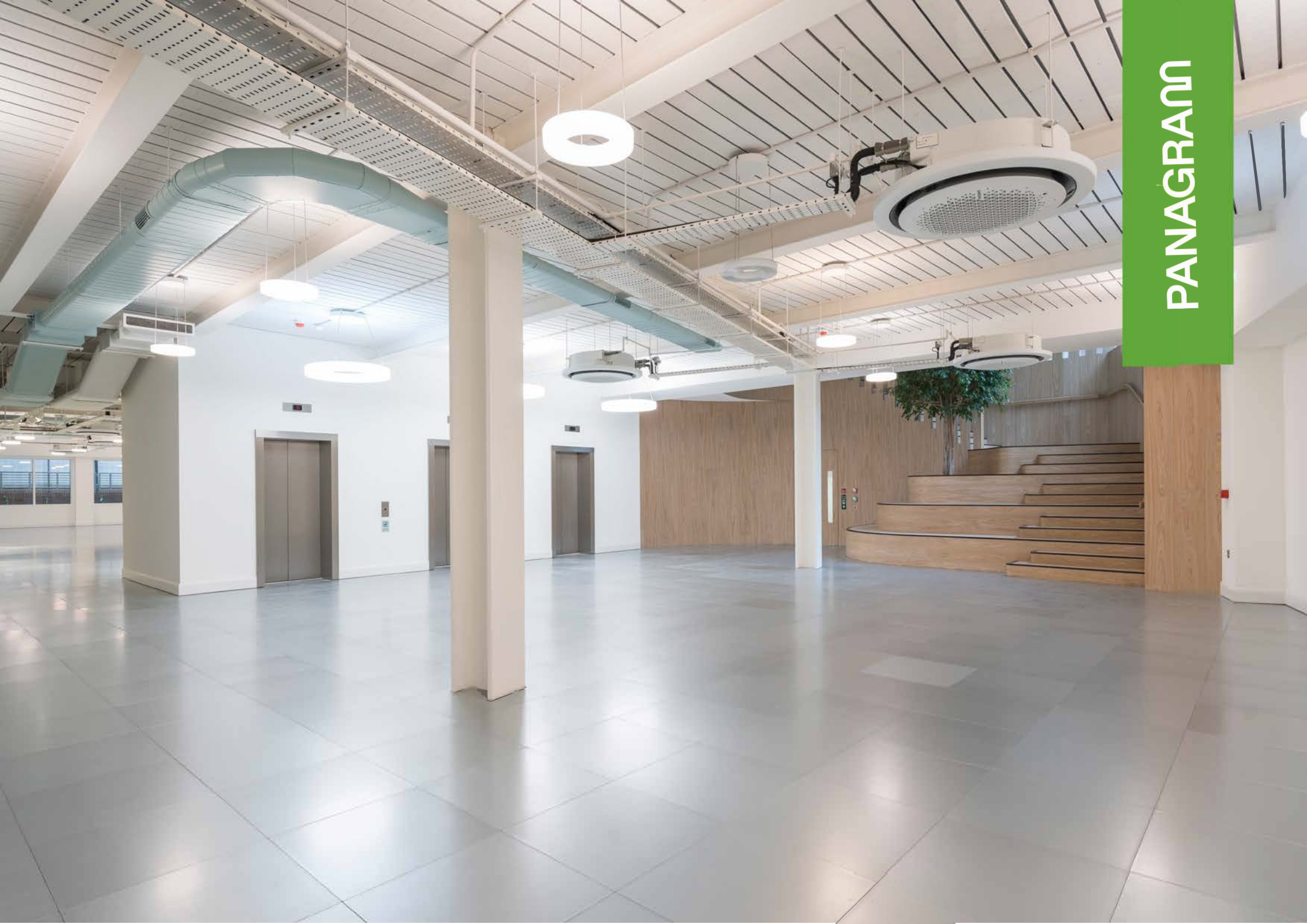
---

Design, Supply and Installation of the following:

- Mains Distribution
- Small Power
- Data Installation
- Mechanical & Plumbing Power Supplies
- Containment
- Lighting & Lighting Control

PANAGRAM





PANAGRAM



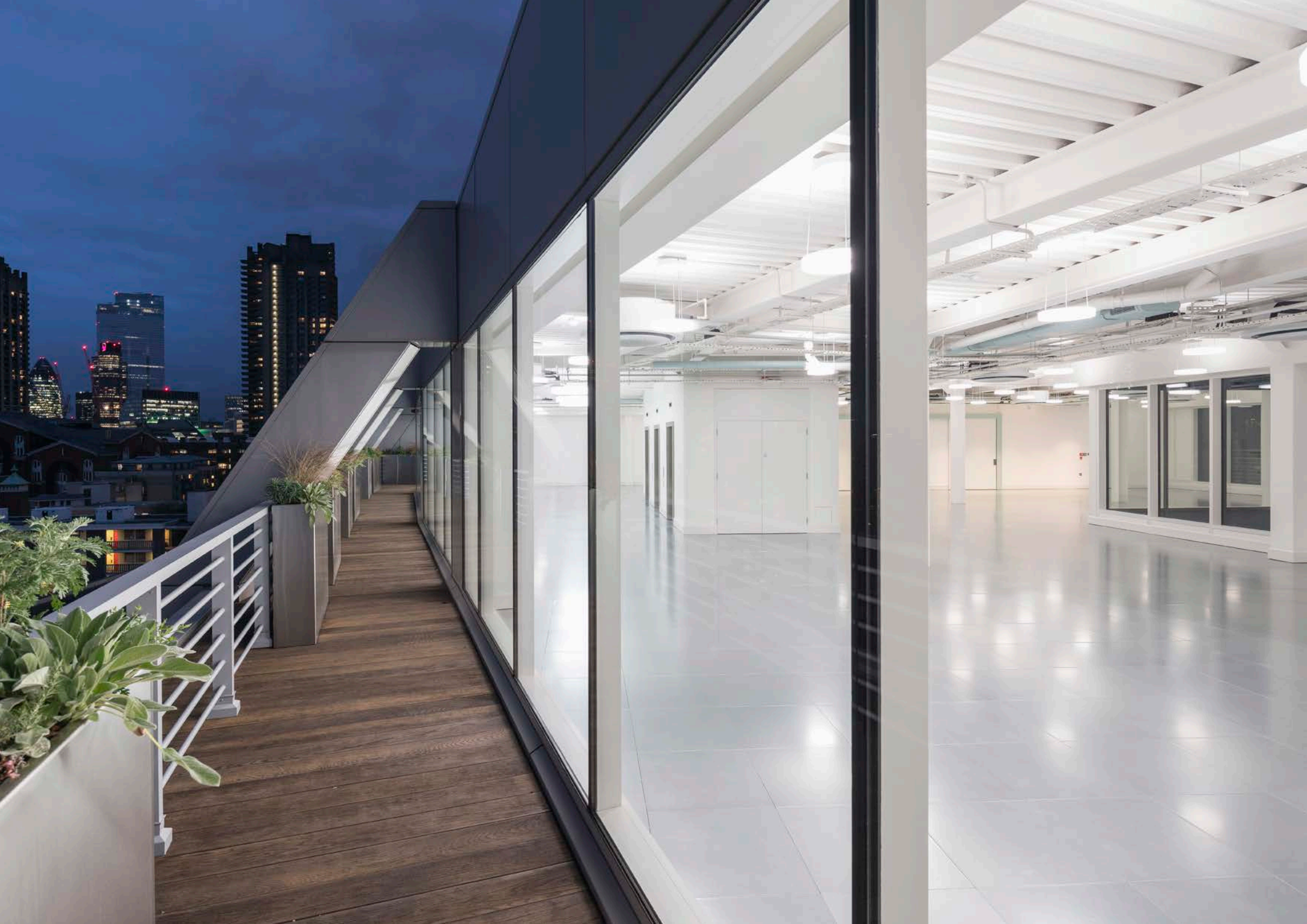
















Design | Build | Maintain

☎ 01908 218830

🌐 [www.rsr.co.uk](http://www.rsr.co.uk)

✉ [info@rsr.co.uk](mailto:info@rsr.co.uk)

📍 Lumen House Rockingham Drive Linford Wood Milton Keynes MK14 6LY

Picture Credit: @opencreatesspace